

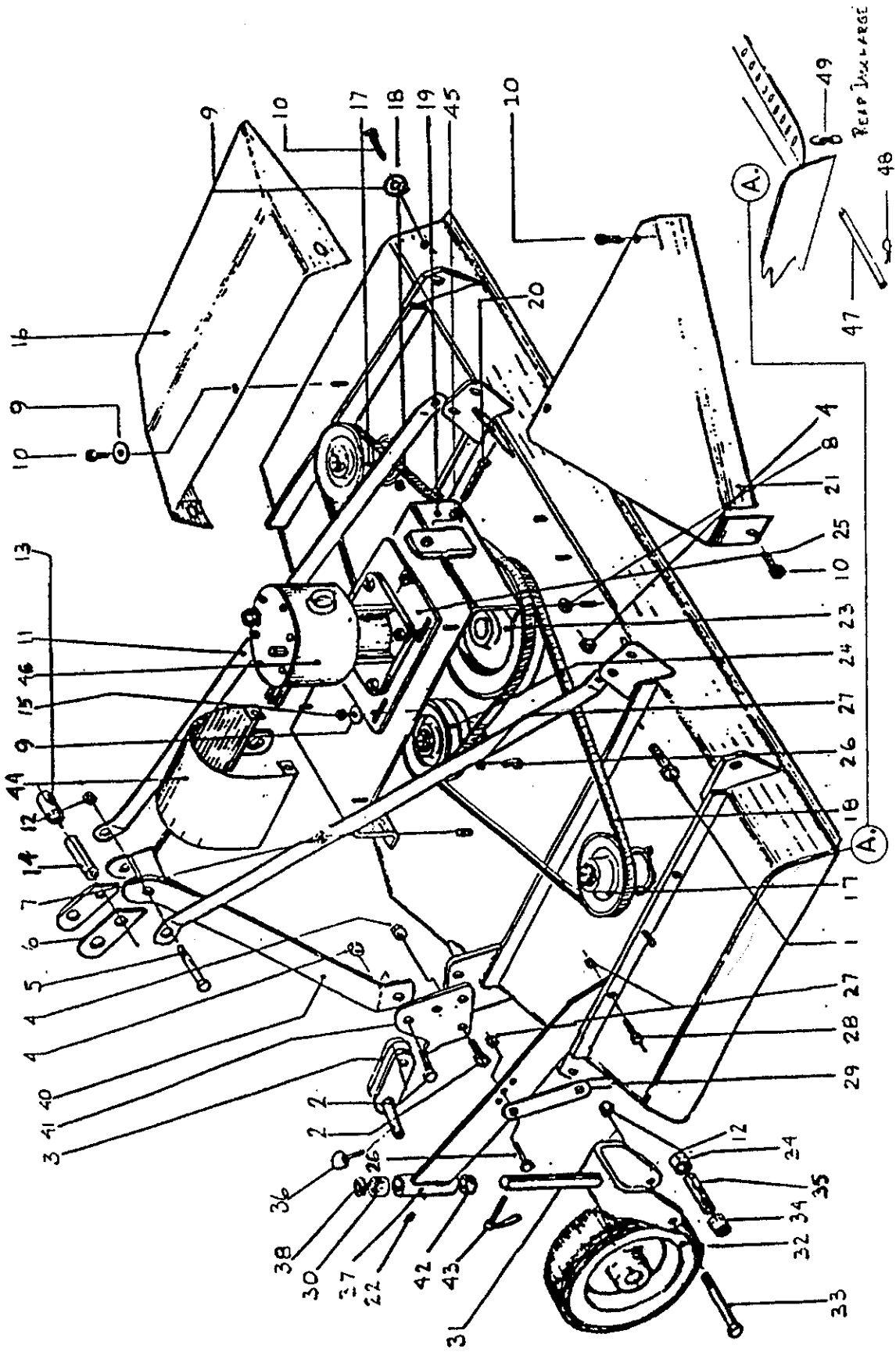
# TROUBLESHOOTING

<b>PROBLEM</b>	<b>POSSIBLE CAUSE</b>	<b>SOLUTION</b>
<b>UNEVEN CUTTING</b>	Washer not between blade and nut	Check washer location at all 3 spindles
	Ground speed too fast	Shift to lower gear
	Blades need sharpening	Sharpen blades
	Caster wheels uneven	Adjust wheel positions
<b>BLADES TURNING BUT NOT CUTTING</b>	Direction of blades is wrong	Blade should turn CCW when you FACE DECK BOTTOM. SEE INSTALLING BLADES SECTION
<b>BELT SLIPPAGE</b>	Lack of tension	Tighten Belt
	Object clogging mower	Remove
	Debris in sheaves	Clean sheaves
<b>MOWER VIBRATES</b>	Object wrapped around blade	Remove object
	Belt damaged	Replace belt
<b>BELT SQUEAL</b>	Belt slipping	Tighten belt
<b>GRASS BUILD UP AT EXIT</b>	Wet grass	Allow grass to dry
	Grass too high	Raise mower, shift to lower gear, make two passes over grass. Mow grass high 1st pass, 2nd pass cut to desired height.
	Tractor rpm too slow	Increase tractor rpm, check engine and PTO speeds.
<b>BELTS ARE TIGHT WHEN INSTALLING</b>	Wrong belt size	Check belt size
	Installed belts incorrectly	See Replacing Belts section.
<b>STREAKING CONDITIONS IN SWATH</b>	Too wet to mow, blades cannot cut grass pressed down by wheels	Allow grass to dry, maintain engine speed and shift to lower gear.
	Dull blade	Sharpen blade. SEE SHARPENING BLADES SECTION.



Three Spindle Mower  
Frame  
17 - (C24, 25, 26) - 715, RD5, R14

GR 17  
SR 2





Three Spindle Mower  
Frame  
17 - (C24, 25, 26) - 715, RD5, R14

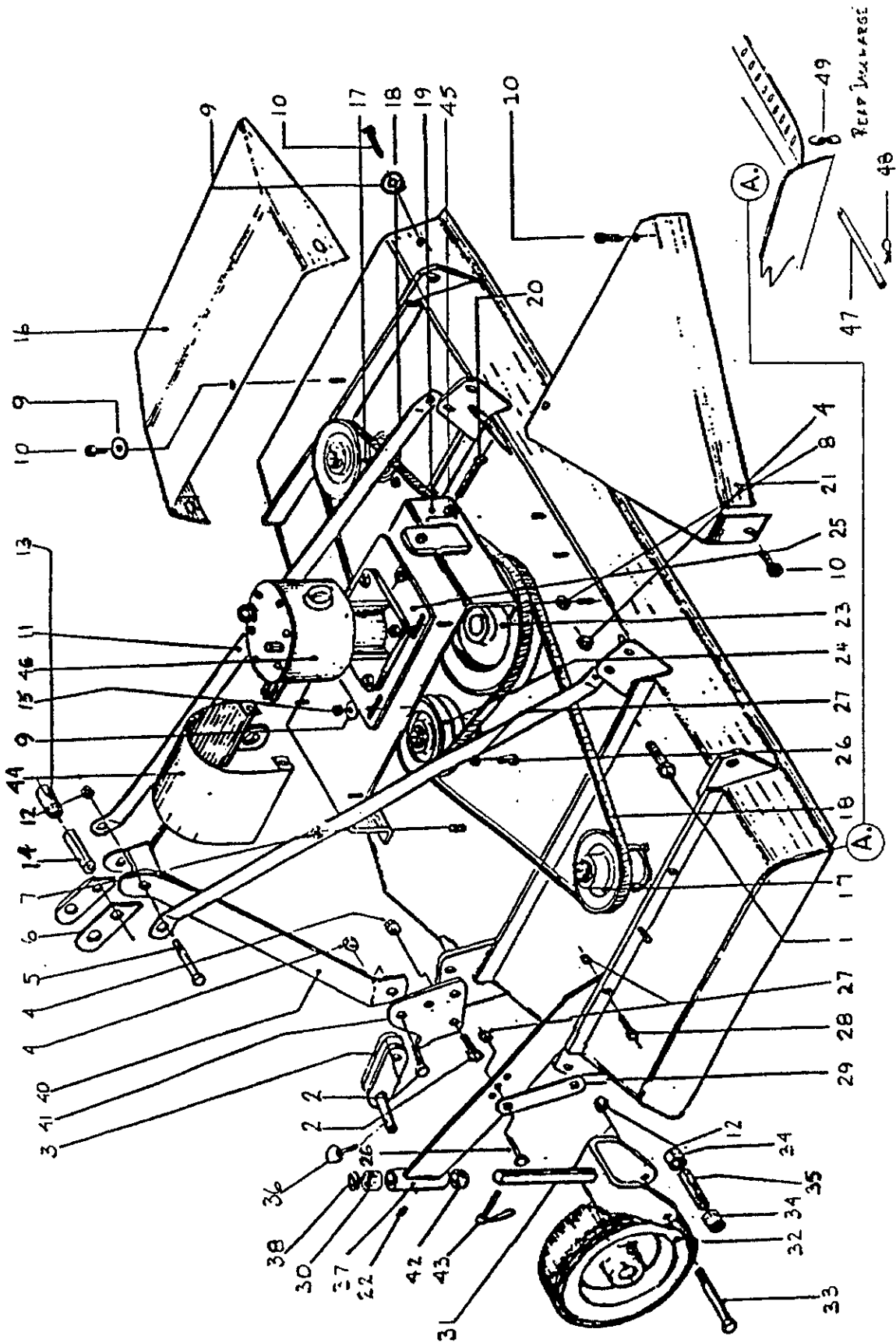
GR 17  
SR 2

ITEM #	PART #	DESCRIPTION	QTY.
1	000 6578	BOLT M16X45	2
2	003 1038	BOLT M16X50	6
3	000 6573	HITCH BLOCK	2
	501 536B	HITCH BLOCK EXTENSION (Optional)	2
4	000 5581	M16 NUT	8
5	007 0582	BOLT M14X130	1
6	000 6895	TOP HITCH PLATE	2
7	003 0156	NUT M10	18
8	000 1279	NUT M10	4
9	003 0157	FLAT WASHER M10	6
10	003 3176	BOLT M10X25	2
11	000 6837	TOP HITCH ARM C24	2
	000 6838	TOP HITCH ARM C25	2
	000 6839	TOP HITCH ARM C26	2
12	003 0358	M14 NUT	5
13	000 6558	OUTER SPACER	1
14	000 6898	INNER SPACER	1
15	001 4106	M10 LOCK NUT	10
16	000 6781	DEFLECTOR C24	1
	000 6521	DEFLECTOR C25	1
	000 6831	DEFLECTOR C26	1
17	000 6792	120X1 PULLEY C24	2
	000 6622	130X1 PULLEY C25	2
	000 6842	160X1 PULLEY C26	2
18	000 6798	BELT 5V-630 C24	2
	000 6693	BELT 5V-710 C25	2
	000 6848	BELT 5V-850 C26	2
19	000 6904	CENTRAL PLATE C24	1
	000 6875	CENTRAL PLATE C25	1
	000 6913	CENTRAL PLATE C26	1
20	000 6547	BOLT M12X100	1
21	000 6775	BELT PROTECTION C24	2
	000 6515	BELT PROTECTION C25	2
	000 6825	BELT PROTECTION C26	2
22	000 1065	GREASE FITTING	4
23	000 6692	PULLEY SPB 250X2	1
24	000 6791	PULLEY SPB 120X2 C24	1
	000 6621	PULLEY SPB 130X2 C25	1
	000 6841	PULLEY SPB 160X2 C26	1
25	000 6541	GEARBOX FLANGE	1
26	004 6334	BOLT 12X45	4
27	001 3345	LOCK NUT M12	12
28	000 6594	BOLT M12X45	12
29	000 6588	WHEEL REGULATE LEVER	8
30	000 6586	SPACER 1"	4
31	000 6597	WHEEL YOKE	4



Three Spindle Mower  
Frame  
17 - (C24, 25, 26) - 715, RD5, R14

GR 17  
SR 2





Three Spindle Mower  
Frame  
17 - (C24, 25, 26) - 715, RD5, R14

GR 17  
SR 2

ITEM#	PART #	DESCRIPTION	QTY.
32	000 6611	WHEEL	4
	502 092B	AIR TIRE	-
33	000 6615	BOLT M14X140	4
	502 093B	BUSHING (PNEUMATIC TIRE)	-
34	502 196B	FLAT WASHER M20 (PNEUMATIC TIRE)	8
	000 8842	SPACER	8
35	000 8841	SPACER	4
36	001 8266	LYNCH PIN	2
37	000 6591	WHEEL ARM	4
38	000 6606	SPACER-WASHER	4
39	000 6594	BOLT M12X45	8
40	000 6881	3 POINT HITCH	1
41	000 6540	LOWER HITCH BLOCK PLATE	2
42	000 6587	SPACER 1/2"	4
43	000 8505	LYNCH PIN	4
44	003 4355	PROTECTIVE COVER	1
45	000 1106	NUT M12	2
46	050 0563	GEARBOX COMPLETE	1

FOR REAR DISCHARGE

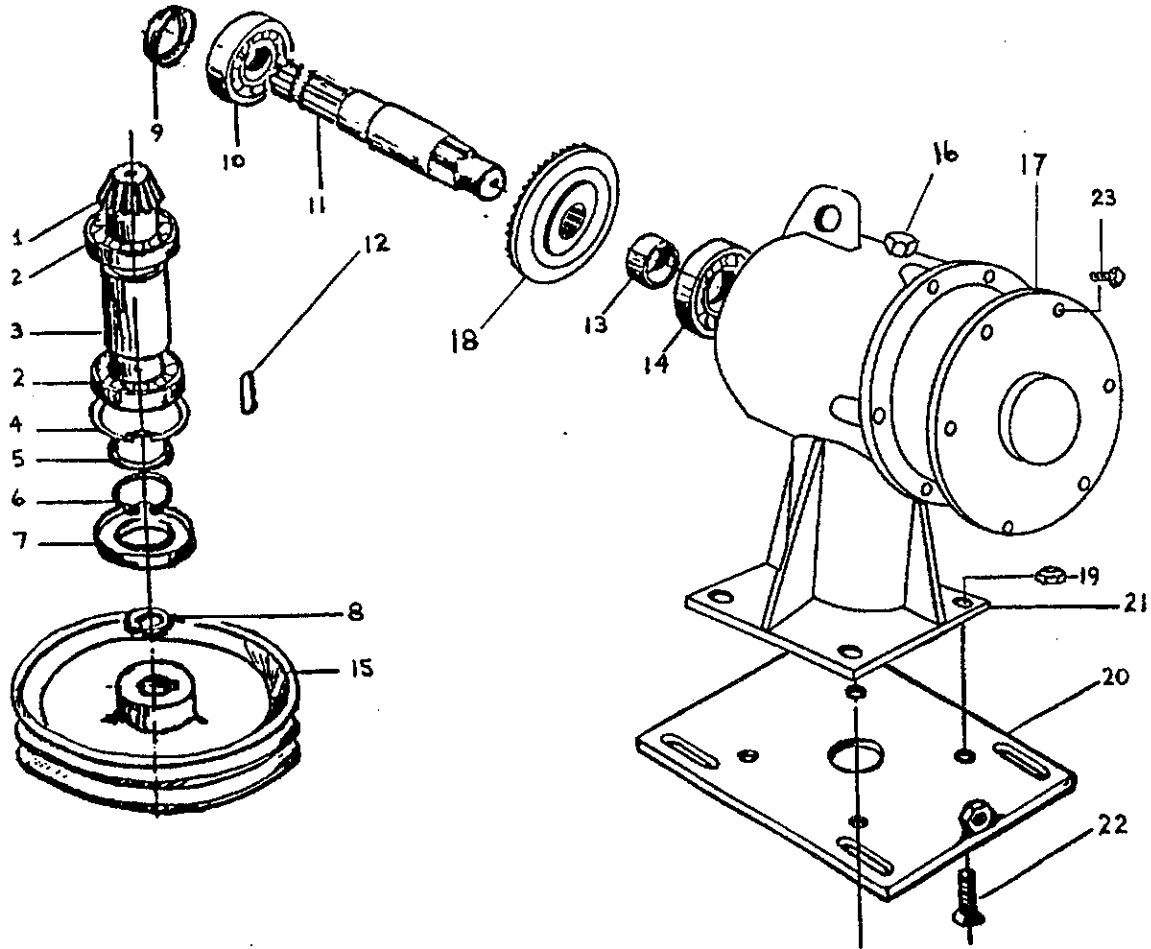
47	020 6762	ROD 5'	1
	030 6762	ROD 6'	1
48	004 4156	COTTER PIN	1
49	000 6764	CHAIN	-



Three Spindle Mower  
Gearbox  
17 - (C24, 25, 26) - 715, RD5, R14

GR 17  
SR 2

OLD STYLE





Three Spindle Mower  
Gearbox  
17 - (C24, 25, 26) - 715, RD5, R14

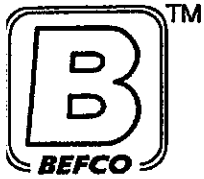
GR 17  
SR 2

ITEM#	PART #	DESCRIPTION	QTY.
1	000 6678 <i>A</i>	PINION GEAR	1
2	001 2149	BEARING 6208	2
3	000 6687	SPACER	1
4	000 1154	SNAP RING M80 I.	1
5	000 6685	SPACER-WASHER	1
6	000 8138	SNAP RING M40	1
7	000 6684	SEAL, OIL 40.80.10	1
8	000 6698	SAFETY NUT M25	1
9	000 2295	SEAL-OIL 35.62.10	1
10	002 5332	BEARING 6207	1
11	000 6657	SHAFT THROUGH DRIVE	1
12	000 6689	KEY M8X7X35	1
13	000 6667	SPACER	1
14	000 2292	BEARING 6305	1
15	000 6692	PULLEY SPB250X2	1
16	000 5586	DIP STICK	1
17	000 6653	COVER, GEARBOX	1
18	000 6679 <i>A</i>	RING GEAR	1
19	003 0064	NUT M12.	4
20	000 6541	FLANGE, GEARBOX	1
21	000 6652	GEARBOX	1
22	002 0227	BOLT M12X45	4
23	000 1241	BOLT 10X25	6
	<del>050 0563</del>	GEARBOX COMPLETE	-

*0642*

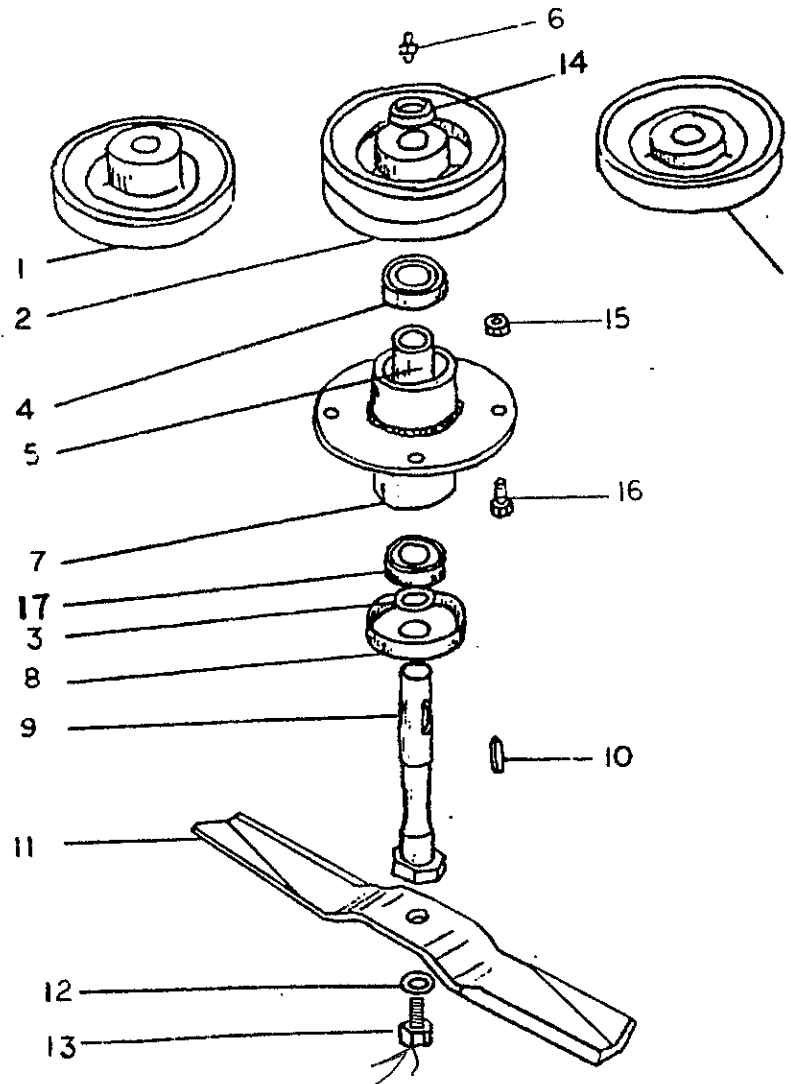
NOTE: For machines before serial number 141765 use the following numbers:

ITEM#	PART #	DESCRIPTION	QTY
17	000 6675	GEARBOX COVER	1
21	000 6654	GEARBOX HOUSING	1
	050 0534	GEARBOX COMPLETE	-



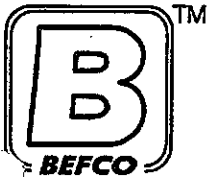
Three Spindle Mower  
Rotor & Blade  
17 - (C24, 25, 26) - 715, RD5, R14

GR 17  
SR 2



OLD STYLE  
HAS NUT



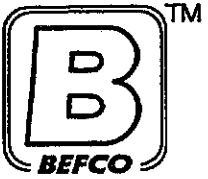


Three Spindle Mower  
Rotor & Blade  
17 - (C24, 25, 26) - 715, RD5, R14

GR 17  
SR 2

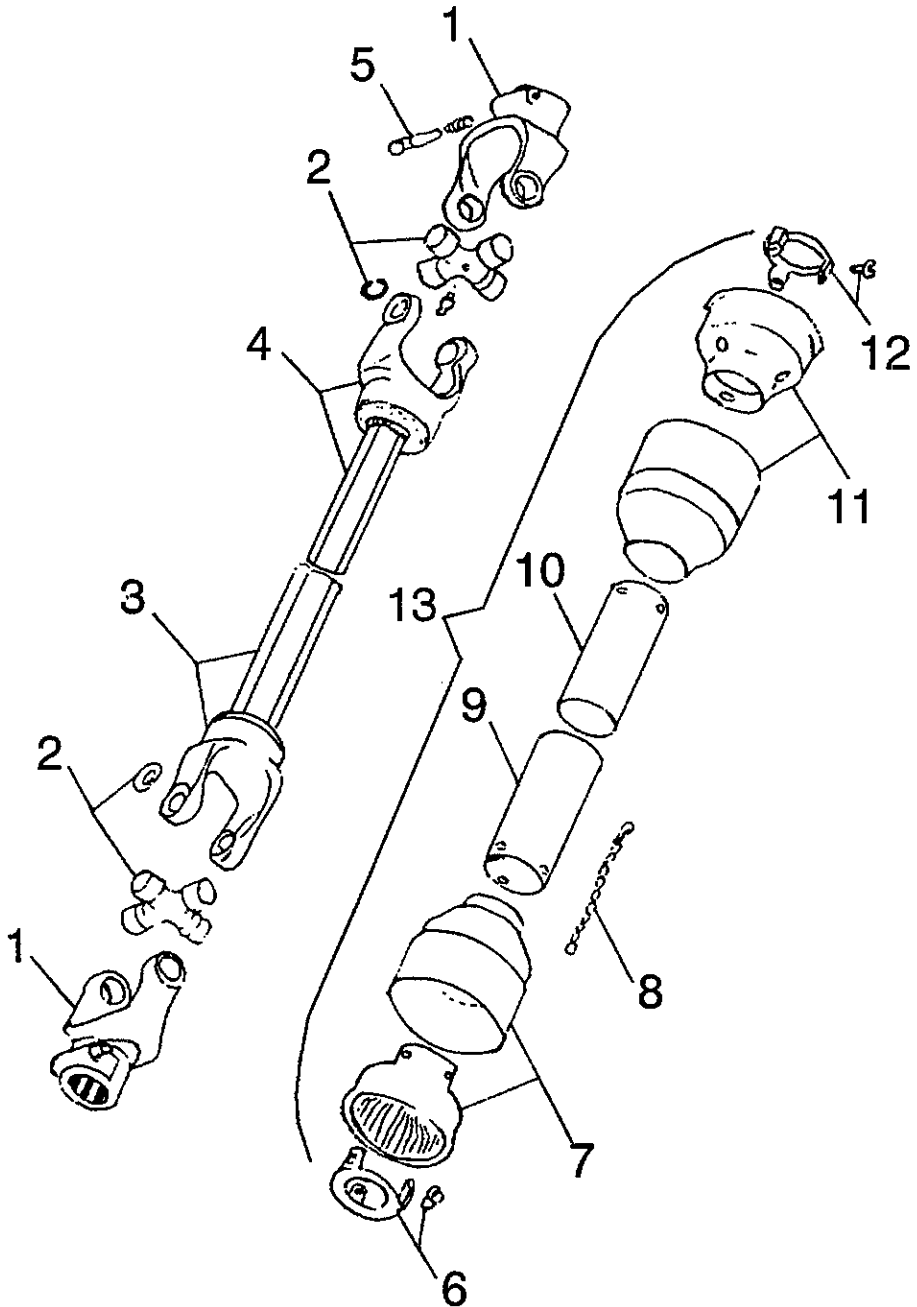
ITEM #	PART #	DESCRIPTION	QTY.
1	000 6792	PULLEY SPB 120X1 C24	2
	000 6622	PULLEY SPB 130X1 C25	2
	000 6842	PULLEY SPB 160X1 C26	2
2	000 6791	PULLEY SPB 120X2 C24	1
	000 6621	PULLEY SPB 130X2 C25	1
	000 6841	PULLEY SPB 160X2 C26	1
3	000 6606	SPACER-RING	3
4	000 6634	BEARING 6205Z	3
5	000 6640	SPACER	3
6	002 9036	GREASE FITTING M8	3
7	000 6648	SHAFT SUPPORT	3
8	000 6636	COVER	3
9	000 6638	BLADE HOLDER SHAFT	3
10	000 6639	KEY M8X7X25	3
11	000 6795	BLADE C24	3
	000 6641	BLADE C25	3
	000 6641B	BLADE (HIGHLIFT) C25	3
	000 6641F	BLADE (FLAT) C25	3
	000 6845	BLADE C26	3
	000 6845B	BLADE (HIGHLIFT) C26	3
	000 6845F	BLADE (FLAT) C26	3
12	000 6642	CONICAL SHAPED WASHER	3
13	000 6643	SELF LOCKING NUT M18	3
14	000 6698	SELF LOCKING NUT M25	3
15	003 0156	SELF LOCK NUT M10	12
16	000 1008	BOLT M10X30	12
17	000 6626	BEARING 6205-2Z	3
	000 6620	SPINDLE ASSEMBLY COMPLETE	3

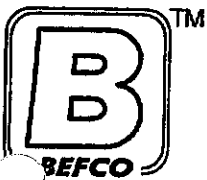
6629



Three Spindle Mower  
PTO  
17 - (C24, 25, 26) - 715, RD5, R14

GR 17  
SR 2





Three Spindle Mower GR 17  
PTO SR 1  
17 - (C24, 25, 26) - 715, RD5, R14

ITEM#	PART #	DESCRIPTION	QTY.
1	023 001E	PUSH PIN YOKE	2
2	013 130E	CROSS & BEARING	2
3	231 018E	OUTER TUBE YOKE C24	1
	231 009E	OUTER TUBE YOKE C25	1
	231 019E	OUTER TUBE YOKE C26	1
4	230 010E	INNER TUBE YOKE C24	1
	230 909E	INNER TUBE YOKE C25	1
	230 011E	INNER TUBE YOKE C26	1
5	026 004E	PUSH PIN SET	1
6	013 012E	LOCKING COLLAR OUTER	2
6A	000 019E	LOCK COLLAR BOLTS - PLASTIC	1
7	013 016E	GUARD CONE OUTER	6
8	016 025E	SAFETY CHAIN	1
9	141 179E	FEMALE SHIELD	2
10	141 275E	MALE SHIELD	1
11	013 028E	GUARD CONE INNER	1
12	013 011E	LOCKING COLLAR INNER	1
13	230 215E	SHIELD COMPLETE	1
	948 204B	PTO COMP. T30 850 MM C24	-
	948 205B	PTO COMP. T30 900MM C25	-
	948 206B	PTO COMP. T30 1050MM C26	-

# ASSEMBLY INSTRUCTIONS

Initial setup, lubrication and adjustment should be performed by the BEFCO dealer. Use the following procedures to properly assemble the mower. Inspect the mower thoroughly after set up and complete the Dealer checklist before delivering the machine to the customer.

This machine is of metric design. The table shown below gives correct torque values for various metric bolts and cap screws. Tighten all bolts to the torques specified.



**CAUTION: MOWER DECK IS HEAVY. USE A SAFE LIFTING DEVICE TO REMOVE MACHINE FROM CRATE.**

This machine is shipped partially assembled in one box. Remove loose parts carefully and layout for easy location. Remove crate sides and leave mower on pallet or remove deck from crate and support on minimum two inch blocks.

NOTE: Right and left hand sides are determined by standing at rear of deck and facing forward.

ALL HARDWARE NEEDED FOR ASSEMBLY WILL BE FOUND IN THE HARDWARE BAG.

NOTE: Assembly will be easier if all mower parts are loosely assembled before tightening the hardware.

## HITCH MOUNT

Locate the 3 point hitch (40) and bolt to deck with the M16x50 bolts (12) and M16 nuts (4).

Locate the inner spacer (14), slide one top hitch plate (6) onto the inner spacer then slide the outer spacer (13) followed by the second top hitch plate (6) onto the inner spacer (14).

Locate the top hitch arms (11). Using the M14x130 bolt (5) and M14 nut (12) bolt the top hitch arm's (11) and top hitch assembly to the 3 point hitch (40).

NOTE: The top hitch plates must move freely. Tighten the bolt for a snug fit but not so as to prevent movement.

TABLE 1: METRIC TORQUE SPECIFICATIONS

BOLT DIAMETER	ASTM CLASS STAMPED ON BOLT HEAD			
	8.8		10.9	
	N.m	(lb-ft)	N.m	(lb-ft)
M8	25	(18)	35	(26)
M10	50	(37)	70	(52)
M12	90	(66)	125	(92)
M14	140	(103)	200	(148)
M16	225	(166)	310	(229)
M18	295	(217)	420	(309)
M20	435	(321)	610	(450)
M25	750	(553)	1050	(774)

When using locks, nuts, increasing torque values by 5%.